



# STYLE GUIDE DRIVEN DEVELOPMENT: ALL HAIL THE ROBOT OVERLORDS!

JOHN ALBIN WILKINS

SENIOR FRONT-END DEVELOPER  
[PREVIOUS](#) [NEXT](#)

# @JOHNALBIN

Senior Front-end Developer  
**PREVIOUSNEXT**<sup>®</sup>



github.com  
/JohnAlbin

Zen Grids

Normalize-scss

KSS-node

Chroma

drupal.org  
/u/johnalbin

Zen Theme

Menu Block

Menu Position

Fences

Conditional Stylesheets

404 Navigation

Simple aggregation

**QUESTIONS?**

**WHERE ARE WE HEADED?**

**“ARE YOU NEW TO  
FRONT-END WEB  
DEVELOPMENT?**

**HERE’S A SECRET:  
NO ONE ELSE REALLY KNOWS  
WHAT THEY’RE DOING EITHER.”**

– NICOLAS GALLAGHER

January, 2013

# FRONT-END BLOG POSTS:

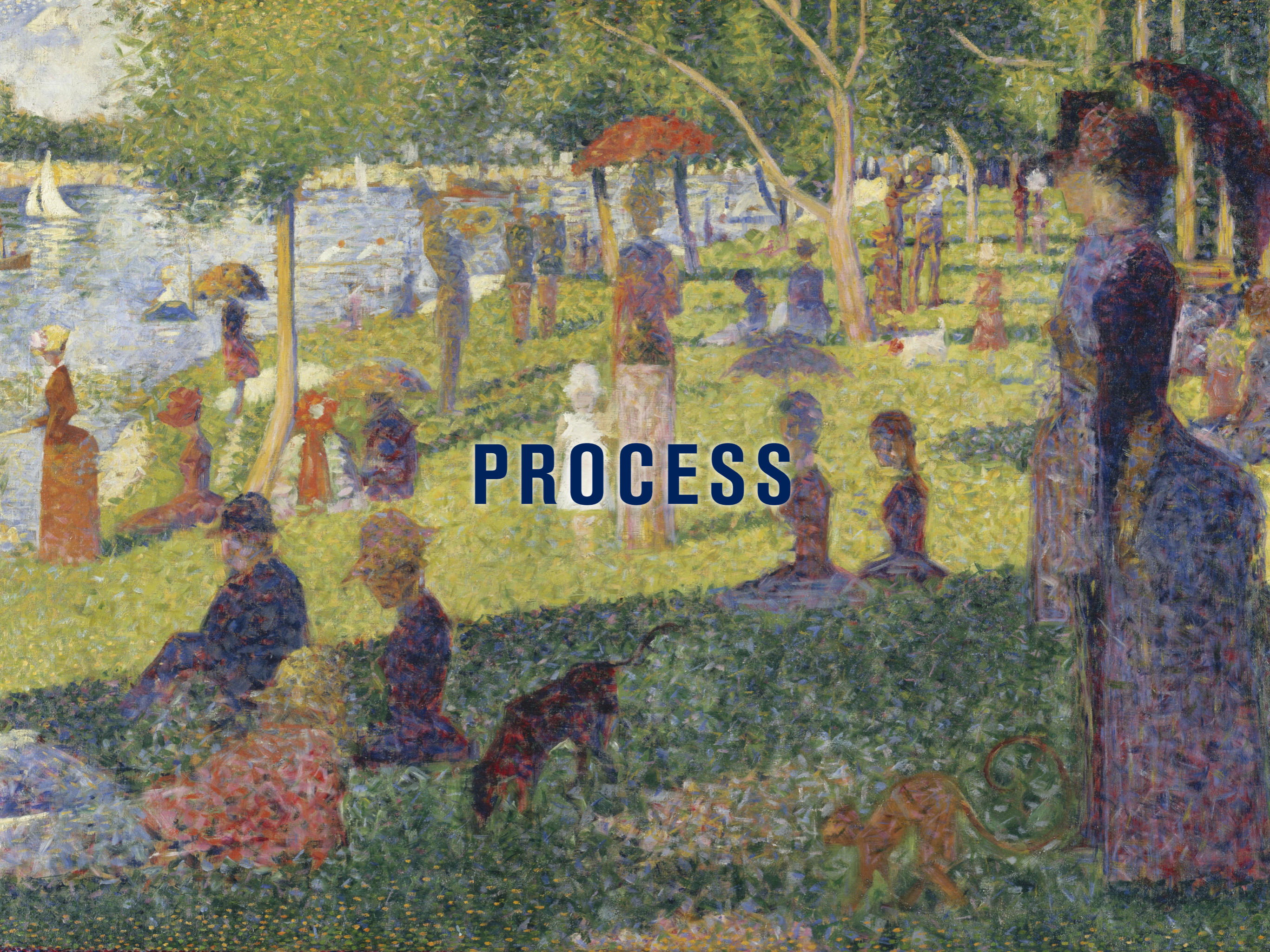
Vagrant  
Twig / Handlebars  
npm shrinkwrap / Bundler  
Grunt/Gulp  
Travis  
Component  
Sass / Less  
Jenkins / CI  
task runner  
build tools  
KSS  
Behat / Selenium  
Web Components  
Wraith  
PageSpeed  
Node.js  
regression testing  
YSlow  
CSS/JS linting  
Cucumber  
CSS frameworks  
Web Starter Kit  
Bootstrap / Foundation  
Yeoman / Bower  
CSS Load  
scaffolding tools

“Everyone is describing the one little piece they’ve created, but don’t explain (or even reference!) the larger concepts of how all of these elements link together.”

— Frank Chimero,  
July 2014 Designer News AMA

An impressionistic painting of a landscape. A path leads from the foreground into the distance. In the foreground, there are large, textured brushstrokes of brown, green, and yellow. A small figure is visible on the path in the distance. The overall style is loose and expressive, with a focus on color and light.

**TECHNOLOGY**

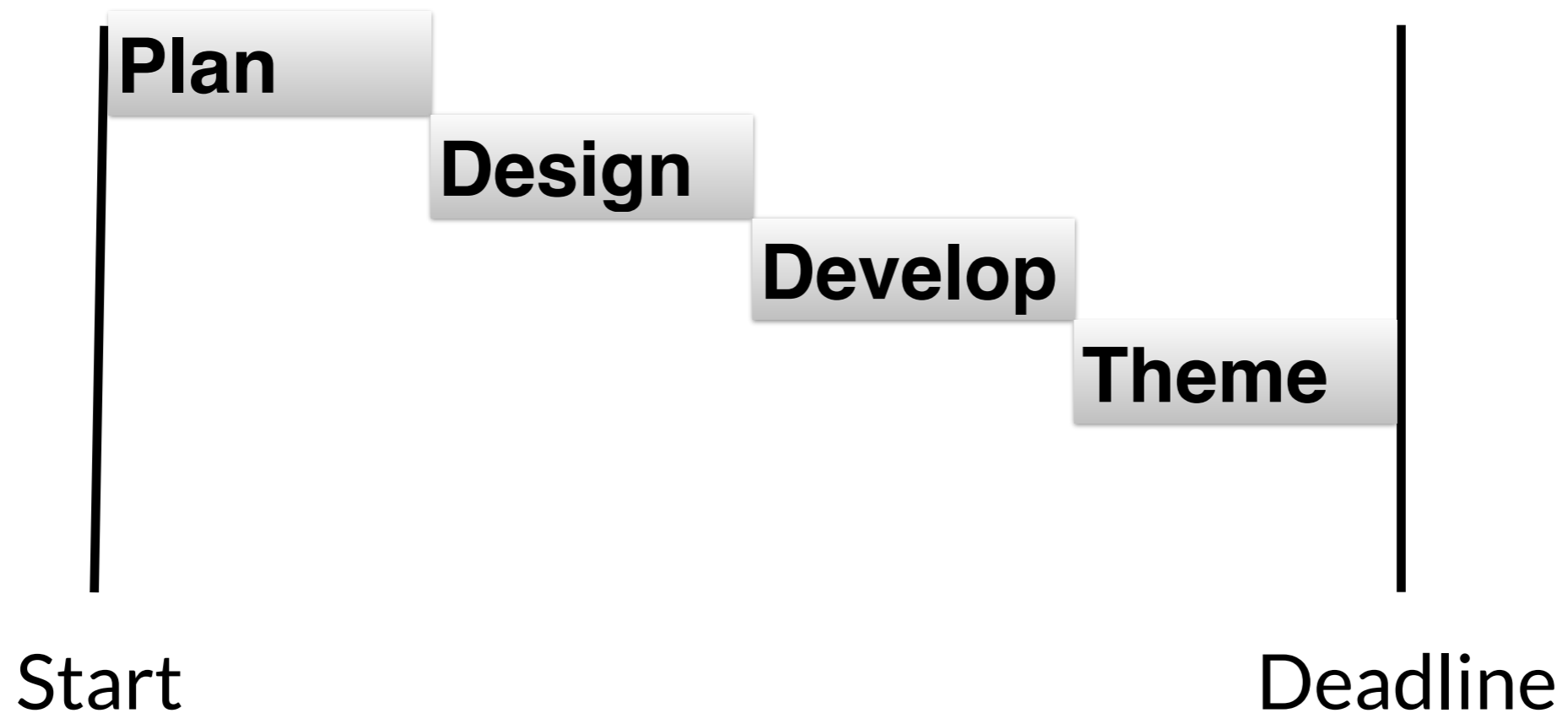


**PROCESS**

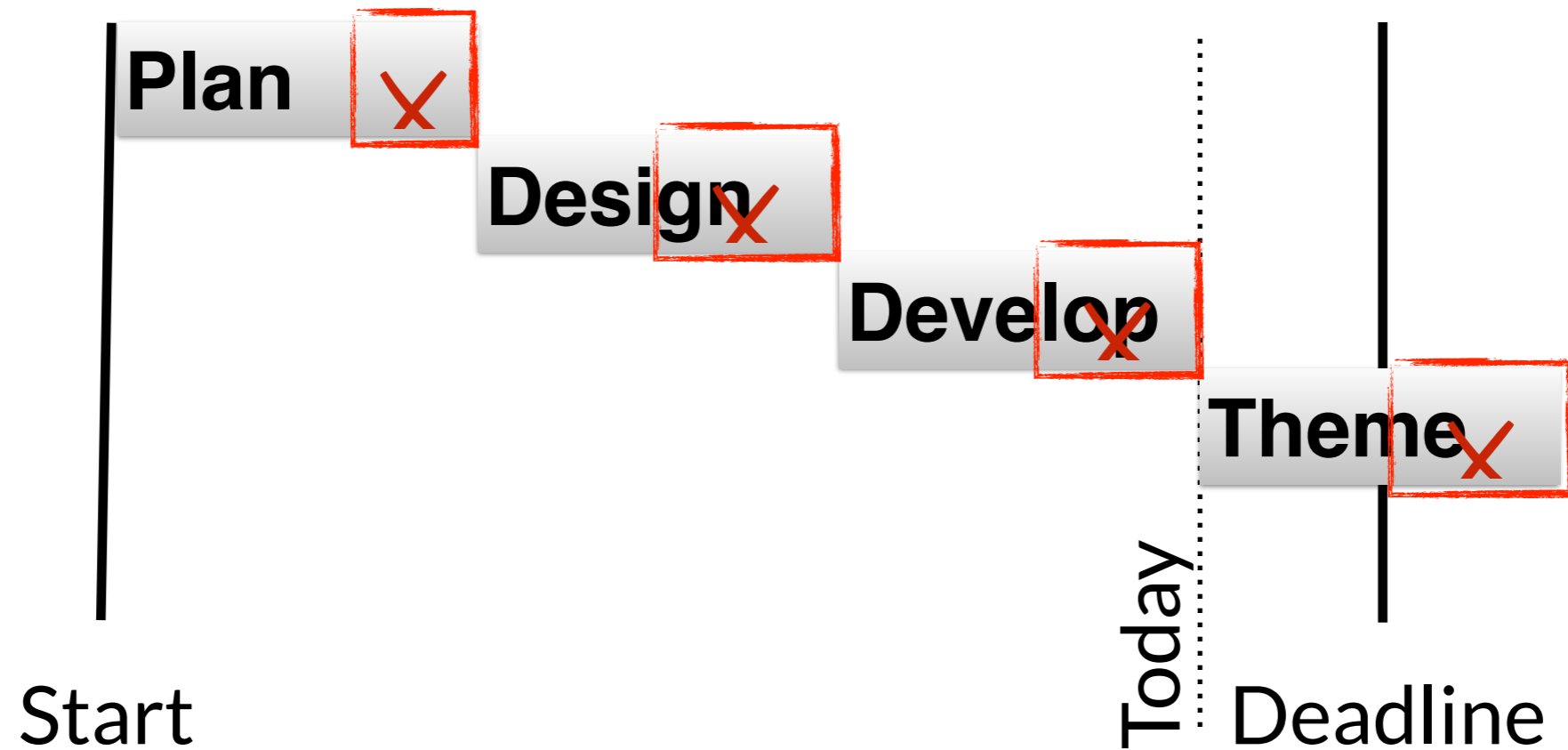
# MAKING SENSE OF FRONT-END TECH

1. Front-end performance ( make shit **faster** )
2. Components ( make shit **modular** )
3. Continuous Integration ( **automate** shit )

# WATERFALL PROJECT



# WATERFALL PROJECT

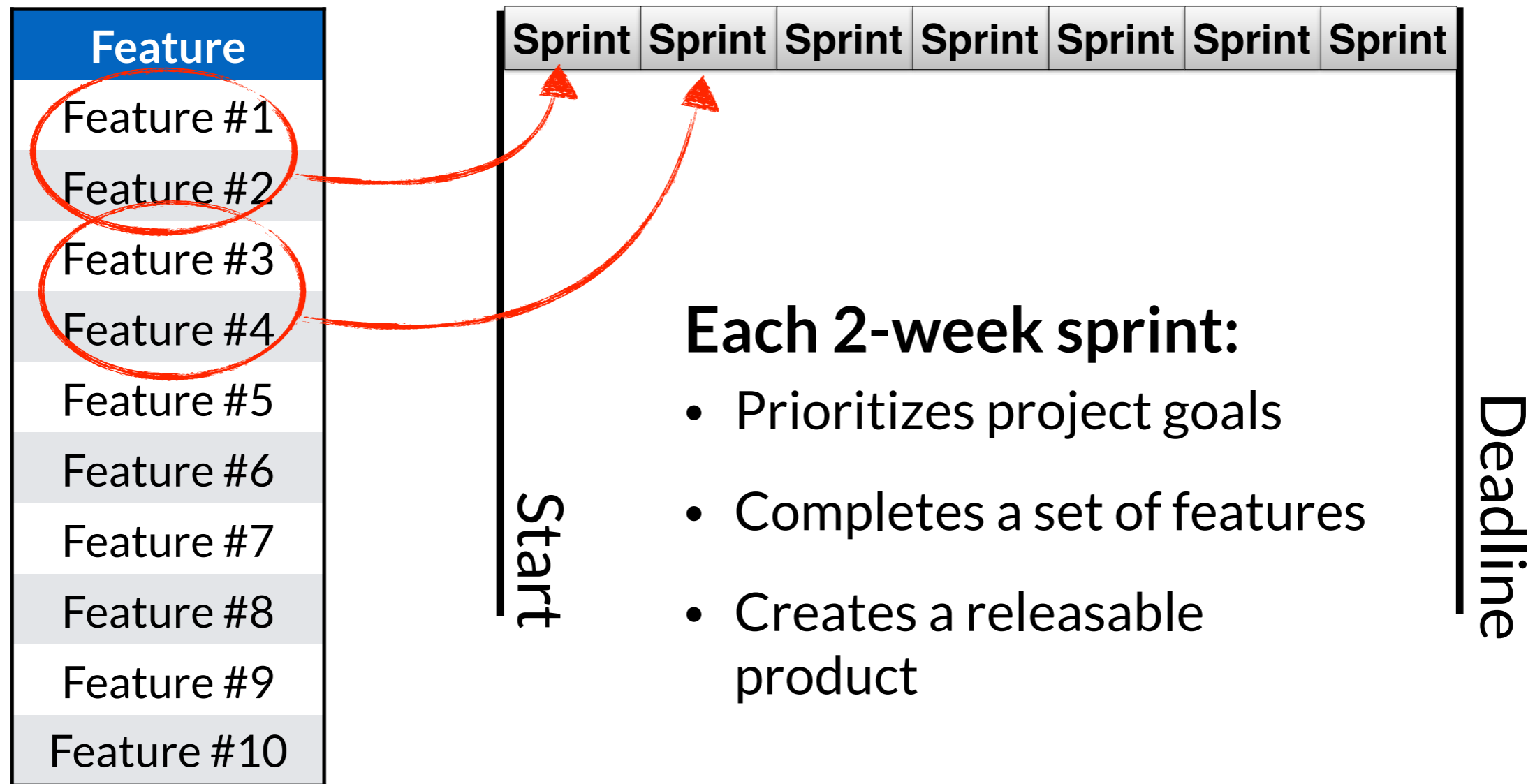


# **AGILE DEVELOPMENT**

## **REDUCE YOUR RISK**

by controlling/minimizing your risk

# AGILE PROJECT



**AGILE + WEB = ?**



# STYLE-GUIDE-DRIVEN DEVELOPMENT

Only requirements are:

**Component-based design**  
and  
**Automated style guides**

# WHAT IS A DESIGN COMPONENT?

“Component” is the same as...

“Object” in OOCSS

“Module” in SMACSS

“Block” in BEM’s Block-Element-Modifier

“Web component” in HTML

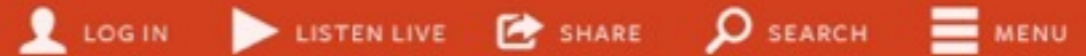
# CSS DESIGN COMPONENTS ARE:

- **Applied to a loose collection of HTML elements**
- **Repeatable**  
(even if never repeated)
- **Specific**  
Replace CSS specificity with specific names
- **Self contained**  
Styles do not bleed onto anything else
- **Nest-able**

Optional 970 x 90 Ad

Sharing Unique Perspectives on Global Issues

Powered by  **PRI's The World**



## Politics & Society



# How Leaks about NSA Surveillance Affect America's Role Around the Globe

 **PRI's The World** | June 10, 2013

The hot topic for President Obama's summit this Friday with the Chinese President Xi Jinping was supposed to be over China's efforts at cyber espionage.

Now there's another hot cyber-security topic to add to the agenda. Revelations this week about the US government's ongoing surveillance ...

ADVERTISEMENT

Artists you love. Music they love.

LEARN MORE



## World News



## NSA whistleblower reveals himself and hopes for safety in Hong Kong

 **The Takeaway** | June 09, 2013

## World News



## Lebanon's Hezbollah Militia Celebrates Its Role in Syria's Civil War

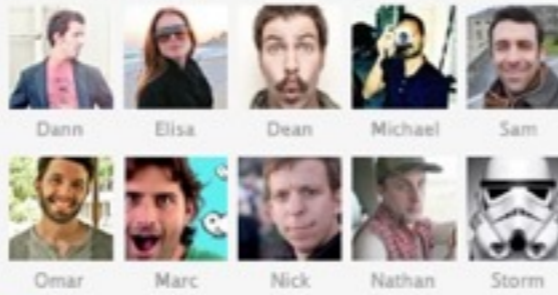
 **PRI's The World** | June 07, 2013



## NSA whistleblower reveals himself and hopes for safety in Hong Kong

The Takeaway | June 09, 2013

242,597 people like [Facebook's privacy policy](#).



Facebook social plugin



### Health & Medicine



Scientists find surprisingly good health levels in ethnically homogeneous ...

### Business & Economy



Brazilians increasingly moving back and forth from U.S. in search of ...

### Arts & Entertainment



American actor vies to play role of Napoleon on 200th anniversary of Waterloo

### Science & Technology



Scientist finds beauty in search for elusive dark matter

### Politics & Society



GOP hopes candidate Gabriel Gomez can reboot relations with Latinos in ...

### World News

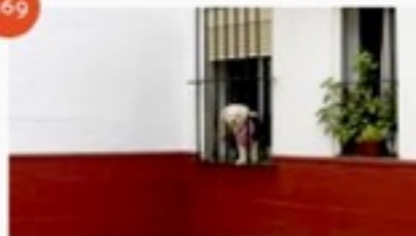


Mosque leader suspected of framing Pakistani teenager for blasphemy

### Newest Stories

Optional 728 x 90 Ad

969

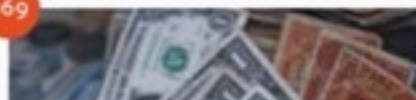


### Politics & Society

Spanish town reminds dog owners to pick up after their pets ... with special deliveries

PRI's The World | June 11, 2013

969



### Politics & Society

U.S. Congress reopens debate over replacing



# SNACSS

1. **BASE COMPONENTS**
2. **LAYOUT COMPONENTS**
3. **COMPONENTS**
  - 3.1. **COMPONENT**
  - 3.2. **ELEMENT**
  - 3.3. **MODIFIER**
  - 3.4. **STATE**
  - 3.5. **SKIN**

} **BEN**

# .flower

3.1.COMPONENT

3.2.ELEMENT

3.3.MODIFIER

3.4.STATE

3.5.SKIN



# **.flower\_\_petals**

3.1.COMPONENT

3.2.**ELEMENT**

3.3.MODIFIER

3.4.STATE

3.5.SKIN



.flower\_\_face .flower\_\_stem



.flower\_\_leaves



# .flower\_\_bed

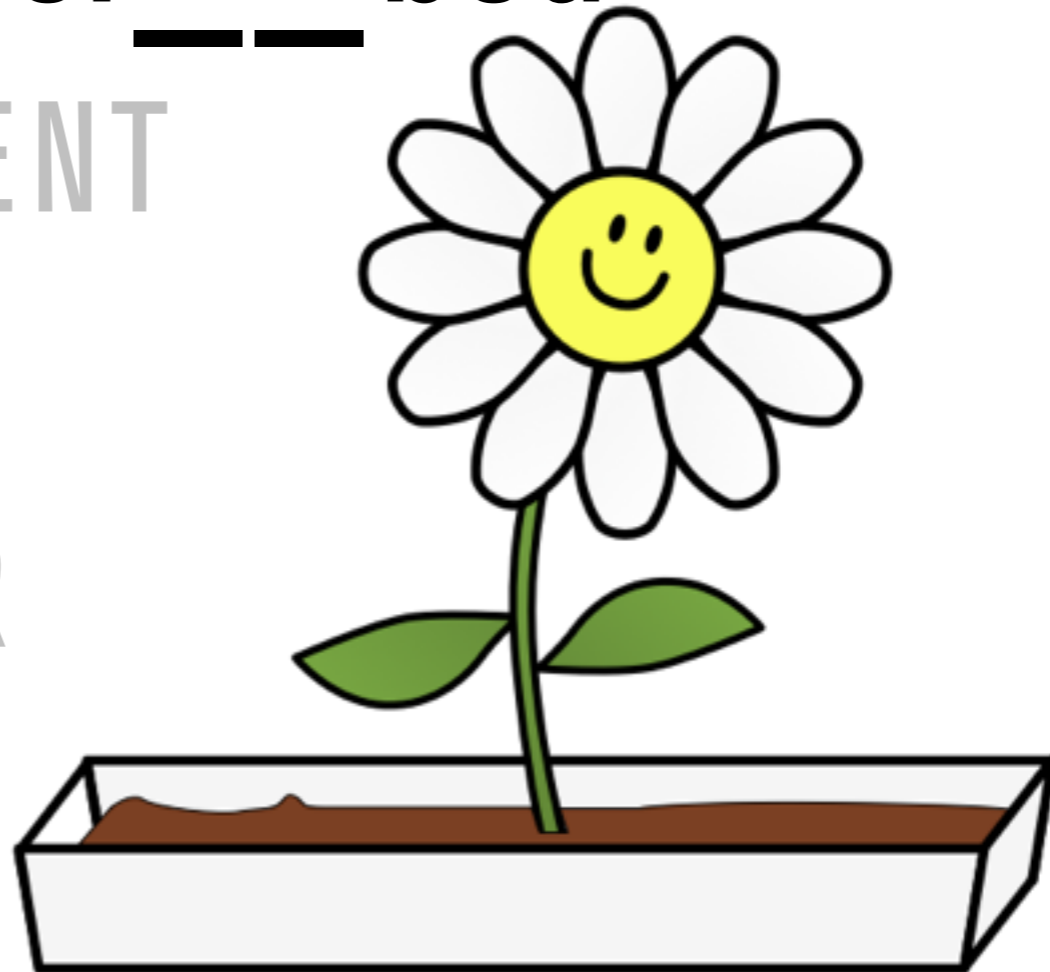
3.1.COMPONENT

3.2.ELEMENT

3.3.MODIFIER

3.4.STATE

3.5.SKIN



# .flower--tulip

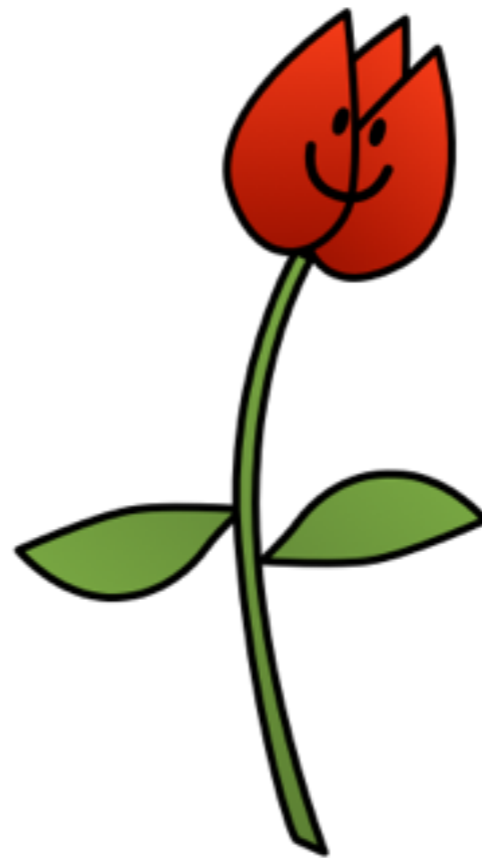
3.1.COMPONENT

3.2.ELEMENT

3.3.**MODIFIER**

3.4.STATE

3.5.SKIN



# .flower: hover

3.1.COMPONENT

3.2.ELEMENT

3.3.MODIFIER

3.4.**STATE**

3.5.SKIN



# .flower.is-pollinating

3.1.COMPONENT

3.2.ELEMENT

3.3.MODIFIER

3.4.**STATE**

3.5.SKIN



# @media (min-width: 48em) { .flower }

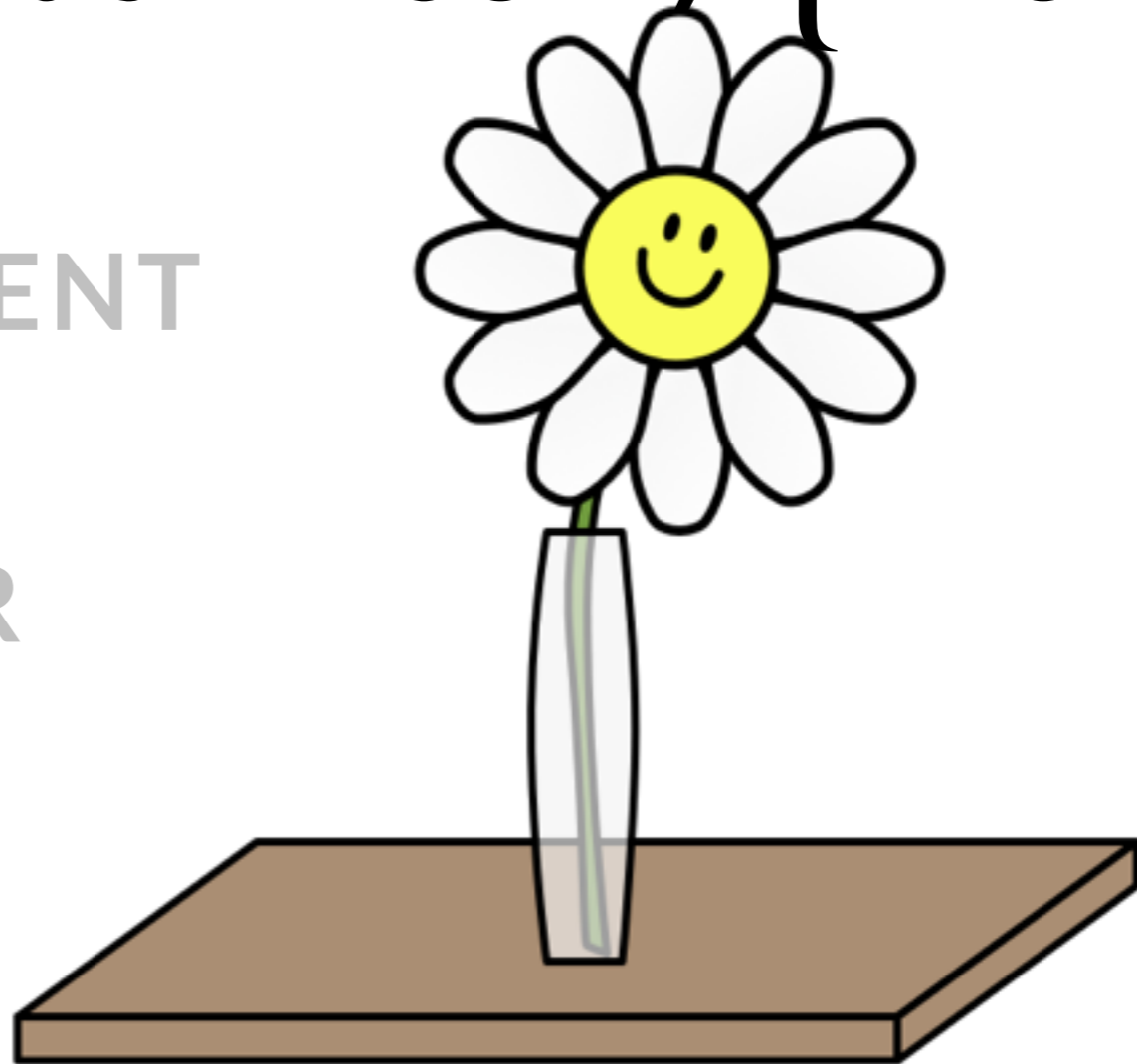
3.1.COMPONENT

3.2.ELEMENT

3.3.MODIFIER

3.4.**STATE**

3.5.SKIN



# @media print { .flower }

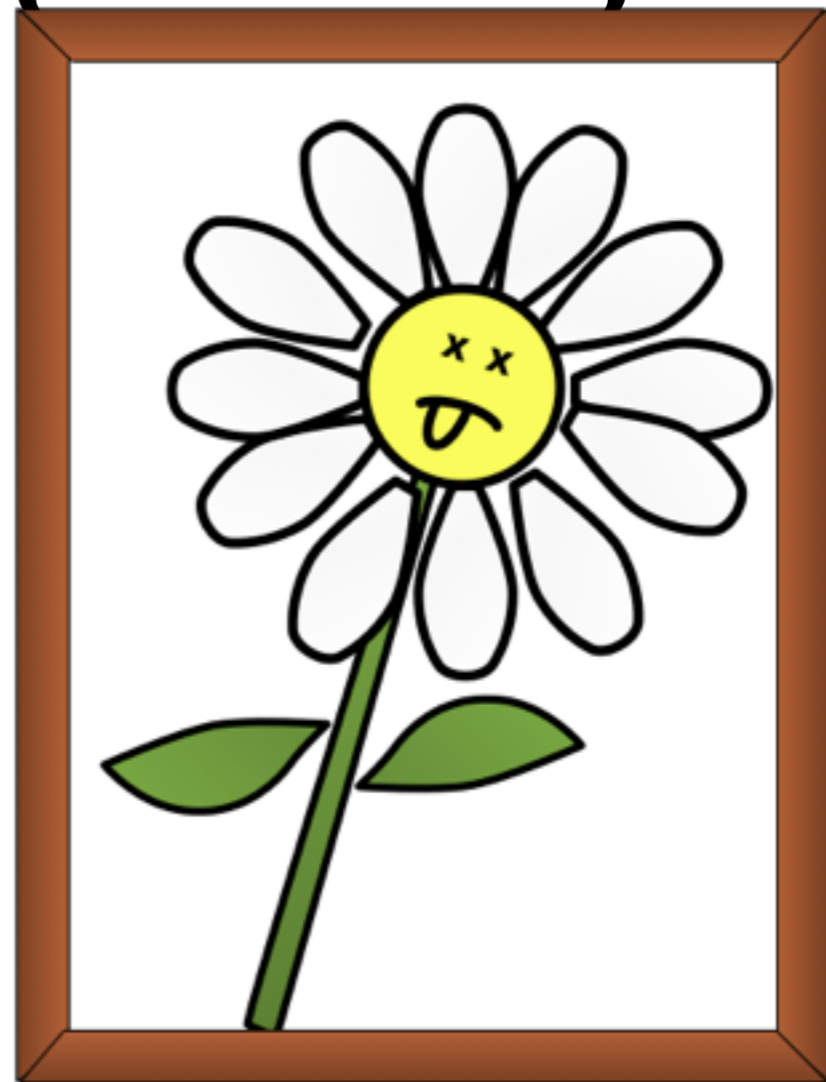
3.1.COMPONENT

3.2.ELEMENT

3.3.MODIFIER

3.4.**STATE**

3.5.SKIN



# .is-night .flower

3.1.COMPONENT  
T

3.2.ELEMENT

3.3.MODIFIER

3.4.STATE  
(global modifier)

3.5.SKIN



# .flower

An automated  
style guide of  
.flower is available:

**[johnalbin.github.io/flower-power](https://johnalbin.github.io/flower-power)**



**DON'T MAKE IT COMPLICATED**

**.channel-tab\_\_guide\_\_upcoming-video**

**SUCKING AT SOMETHING**

**IS THE FIRST STEP TO BECOMING SORTA GOOD  
AT SOMETHING**

**Naming things is hard**

***if* the names are user-facing**

# HOW TO NAME THINGS:

- **Spend 30 seconds to name it**
- **Develop**
- **Spend 5 minutes reflecting (Maybe add a TODO)**
- **Commit**
- **After some time, refactor**

# NAMING CONVENTION > NAMES

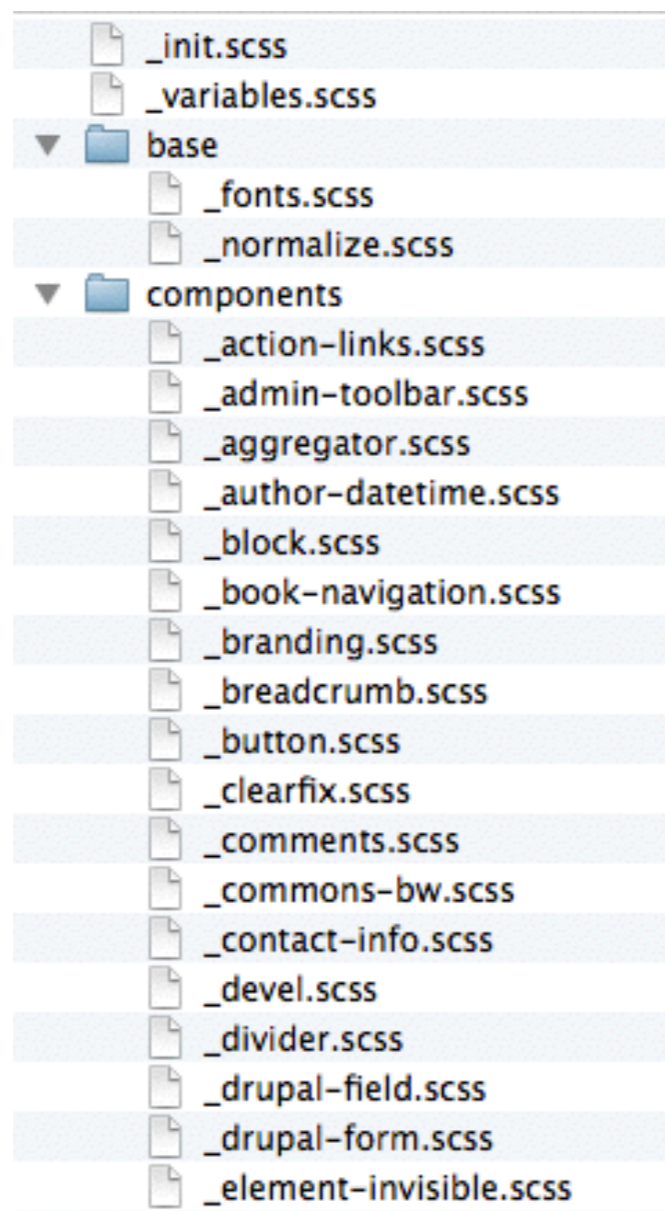
## DRUPAL 8 CSS CODING STANDARDS

[www.drupal.org/node/1886770](http://www.drupal.org/node/1886770)

# All the selectors

- `.the-component`
- `.the-component--modifier`
- `.the-component__an-element`
- `.the-component--modifier__an-element`
- `.the-component.is-state`
  - `.the-component: hover`
  - `@media all { .the-component {} }`
- `.the-skin .the-component`

# EASY TO FIND YOUR COMPONENTS.



- **Inspect the DOM.**
- **Find the CSS class on the component.**
- **Look for a file with that name in the components folder.**

# THE “FUGLY” SELECTOR HACK

```
.feature__title a {  
  &:link,  
  &:visited {  
    @extend %feature__title-link;  
  }  
  &:hover,  
  &:focus {  
    @extend %feature__title-link-is-hover;  
  }  
}
```

Selector in DOM  
I couldn't change

Class name I wish  
I could use in DOM

**Style guides are:**

**documentation**

**for design systems**

**Style guides are AMAZING!**

**Out-of-date style guides are  
USELESS!**

# AUTOMATED STYLE GUIDE



**A Spec for Docs**



**A Preprocessor & JS API**

**kss-node**

**[github.com/kss-node/kss-node](https://github.com/kss-node/kss-node)**

# KSS: super-simple documentation

```
/*
```

```
Button
```

```
Your standard button suitable for clicking.
```

```
:hover    – Highlights when hovering.
```

```
.shiny    – Do not press this big, shiny, red button.
```

```
Style guide: components.button
```

```
*/
```

```
.button {
```

```
    ...
```

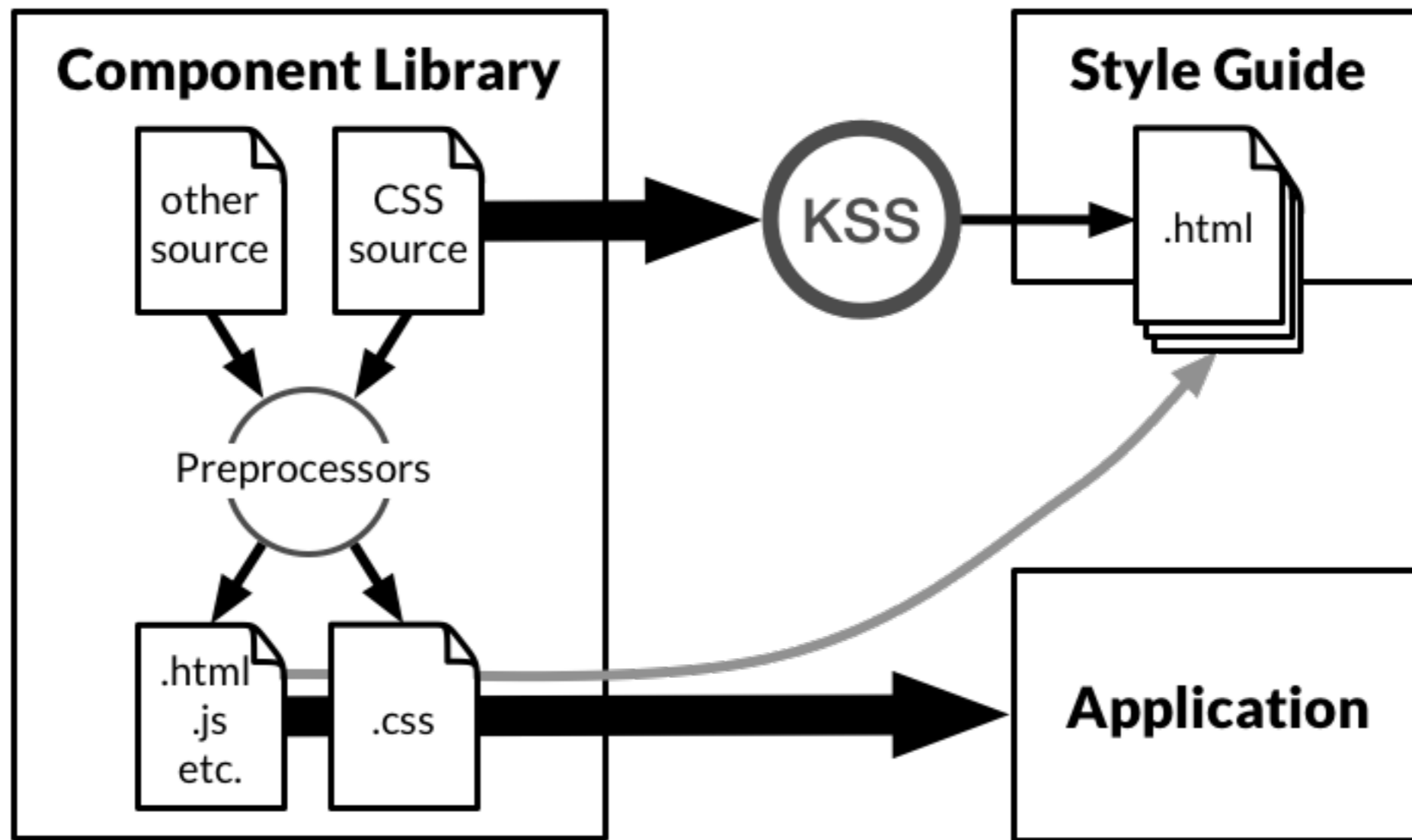
```
}
```

```
.button.shiny {
```

```
    ...
```

```
}
```

# AUTOMATED STYLE GUIDE



# TASK RUNNER?

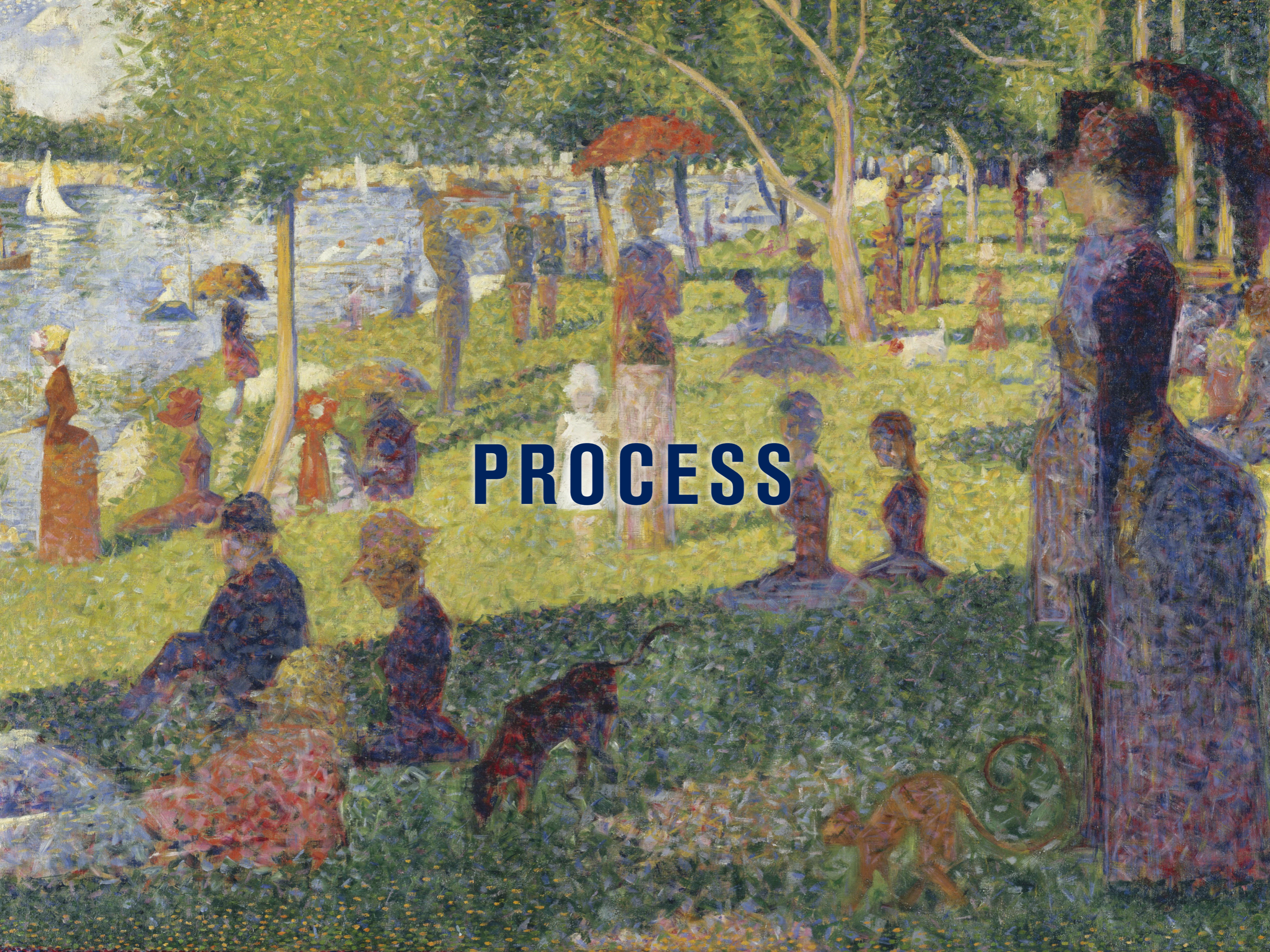
- **Build CSS from Sass/LESS/etc.**
- **Linting for CSS/Sass/JavaScript**
- **Build Style Guide**
- **Visual Regression testing**
- **Live reload**

**LIVE DEMO !!!!**

# STYLE-GUIDE-DRIVEN DEVELOPMENT

Only requirements are:

**Component-based design**  
and  
**Automated style guides**



**PROCESS**

# PROCESS TRIFECTA!

- **Designers**
- **Back-end developers**
- **Front-end developers**

# DECOUPLED DEVELOPMENT

Actual back-end developer quote:

**“i love the style guide stuff.  
Means I can make things pretty!!!”**

# SO MUCH WIN!

- **Designers**
- **Back-end developers**
- **Front-end developers**
- **Clients**
- **Lawyers**
- **Project Managers**
- **even more!**



# WHAT DID YOU THINK?

EVAULATE THIS SESSION - [LOSANGELES2015.DRUPAL.ORG/SCHEDULE](https://losangeles2015.drupal.org/schedule)

## THANK YOU!